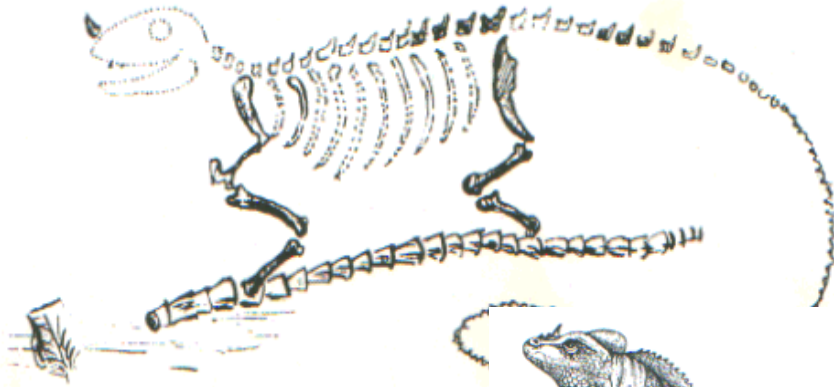
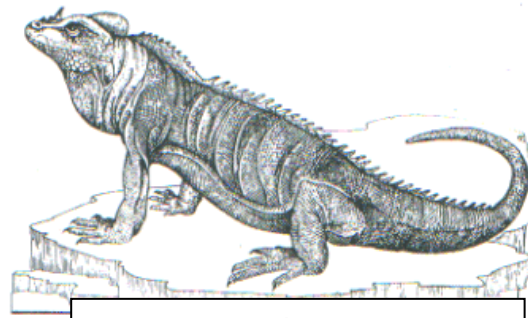


1. Drawing made in 1825 by Gideon Mantell who discovered *Iguanodon*



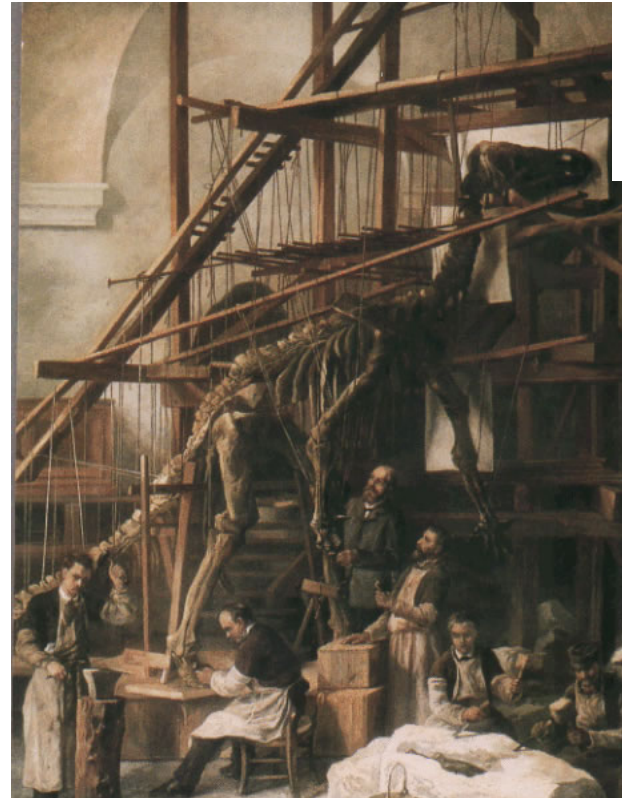
2. Model of *Iguanodon* made for the Great Exhibition in 1851 based on Mantell's ideas about the skeleton.



Drawing of a living iguana

Look at the pictures showing how the interpretation of the *Iguanodon* has changed over time.

Why do you think ideas about the animal have changed?



2. 1880's interpretation of how *Iguanodon* stood by Louis Dollo



3. Current interpretation of *Iguanodon* by David Norman and others.