

## Find out more

- Leaflets, activity sheets and guides are available – help yourself
- Free rock, mineral and fossil identification service – ask in the shop
- Reference books, story books and magazines are available in the gallery
- Visit [www.sedgwickmuseum.org](http://www.sedgwickmuseum.org) for further resources and information

## Get a better view

- Step stools and magnifying sheets are available in the gallery
- Look out for the rocks and fossils that you can touch

## Free services for schools and groups

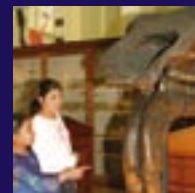
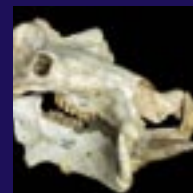
- Talks, activities and tours, by arrangement
- Rock, fossil and mineral sets for loan

Access to the Museum is via steps or a small lift, which may not be accessible to all types of wheelchair. We are working to improve access and staff are always willing to help. Please talk to a member of staff if you have any questions.

The Museum is free to all, but please make a donation to help us continue our work. Photography for personal use is permitted, using hand-held cameras. Please do not eat, drink or smoke in the Museum.

Our opening hours are: Monday – Friday 10am – 1pm and 2pm – 5pm, Saturday 10am – 4pm. The Museum is closed on bank holidays.

The Sedgwick Museum is supported by:



# Gallery Plan

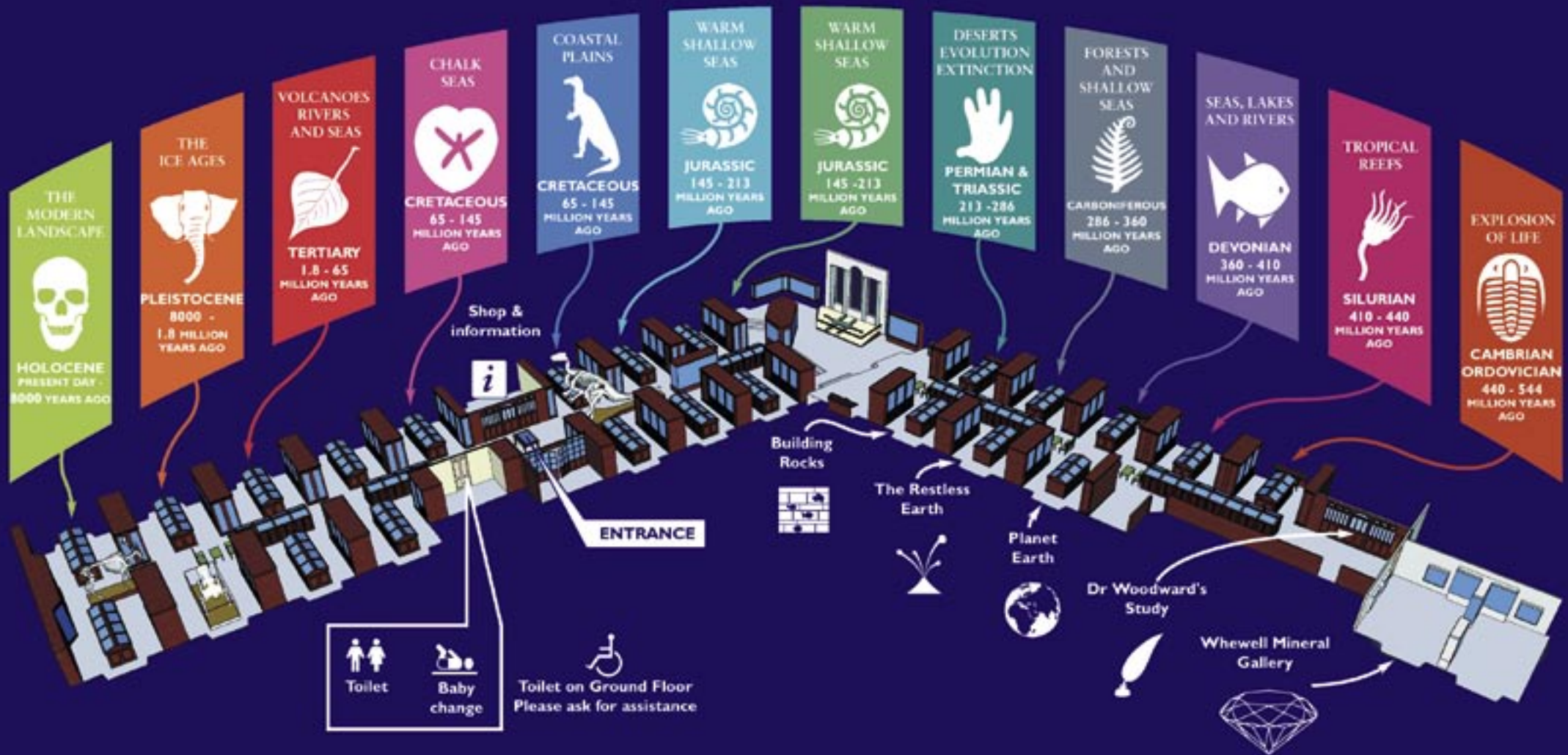
Welcome to the Sedgwick Museum, an internationally important collection of over 1.5 million fossils, rocks and minerals.



Sedgwick Museum of Earth Sciences  
University of Cambridge  
Downing Street, Cambridge  
Telephone: (01223) 333456

[www.sedgwickmuseum.org](http://www.sedgwickmuseum.org)

# Welcome to the Sedgwick Museum



Travel through time ...

as you walk through the gallery you will pass through more than 500 million years of the history of life on Earth.